

C17 timber-frame house. Rendered. Thatched roof with gabled ends. Central brick chimney stack with lozenge-shaped shafts, rendered. One storey and attic. Eaves swept over attic windows. Two windows wide. Modern casements with glazing bars. Late one storey wing on west end with pantile roof.

### Ground floor, North room looking south towards chimney stack.

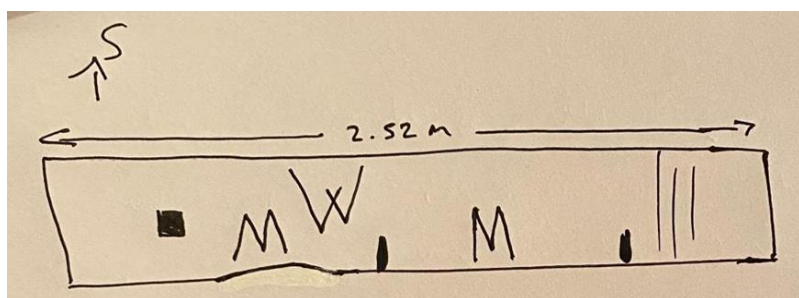
Much of the Bressummer has been heavily abraded by a circular sanding disk. Evidence of two M and one W. Possibly compass drawn circles but more likely to be abrasion marks. Photo included but not drawn in to schematic diagram.





In the NW corner are 4 burn marks on the timber.

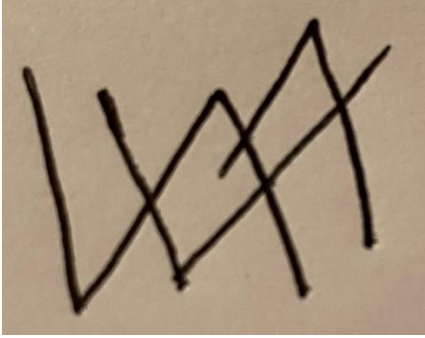
In the central roof beam are a number of indistinguishable marks, possibly part of a circle and slash marks.

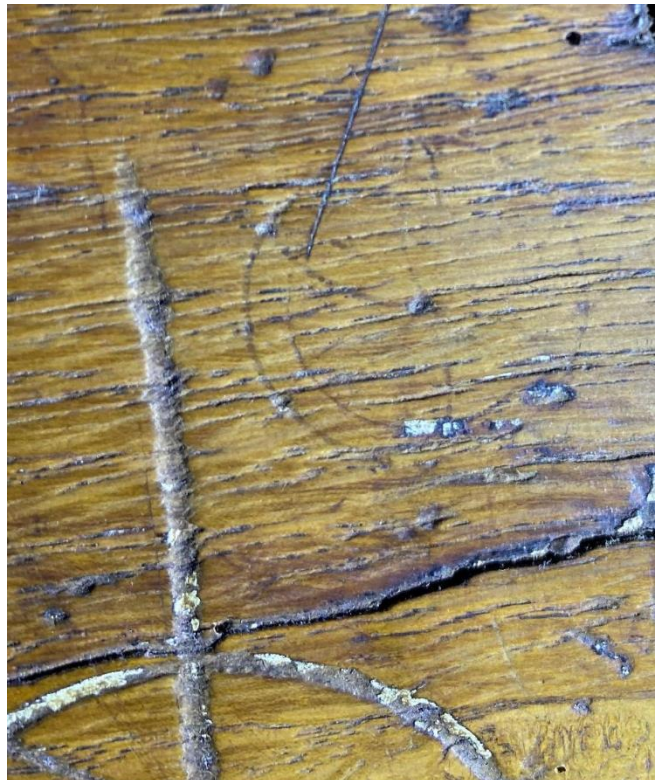
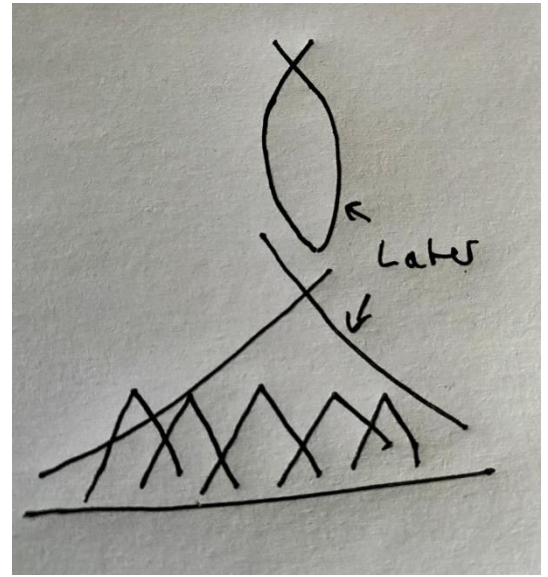


# Southern room, downstairs. North-facing Bressummer.

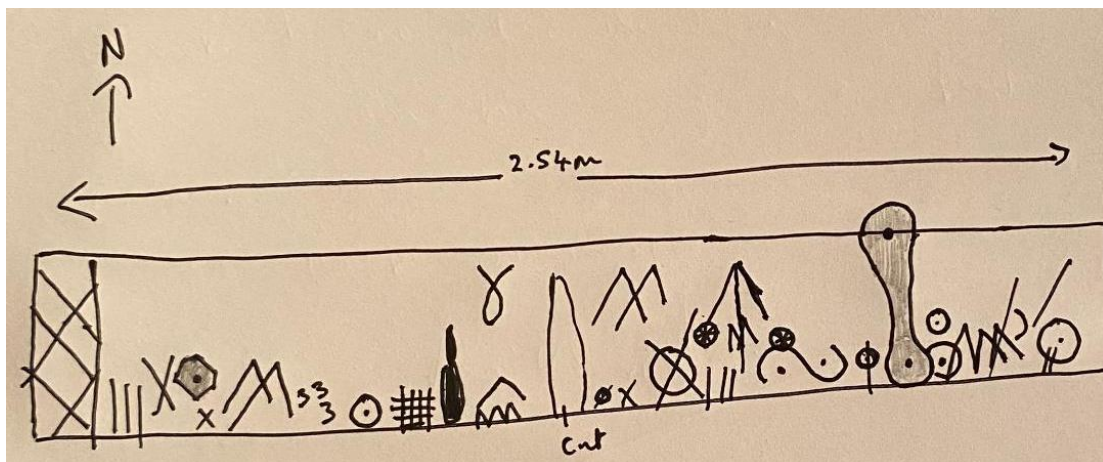
Lots of marks, beam not so heavily sanded reveals several layers of marks.











There are many different symbols made at a variety of times. Diamond-shaped mesh of left of bressummer, score marks and X marks and grid. A variety of M or W – possibly 3 phases starting with complex and sharp lines (W,M, A cypher), finely drawn and interconnected M (lightening?) followed by later, fewer, rougher and deeper M. Compass drawn circles (several 1.5-3cm diameter) and two hexafoils. Some deeply incised compass drawn circles cut hexafoils. Two partial circles make an “S” shape on its side. 1 clear burn marks, hacked wood, Almond -shape (one other also found above the fire). 3, 3, 3 stamp mark.

In southern corner of room on west beam of the door = W rotated sideways (deep and crude cut), X mark, burn mark and 8 circular punch mark 2-3 mm diameter, some overlapping.

Order of occurrence = Oldest Fine complex M

Hexafoils, burns, M, X

Deep compass drawn circles, deep cruder M and stamps

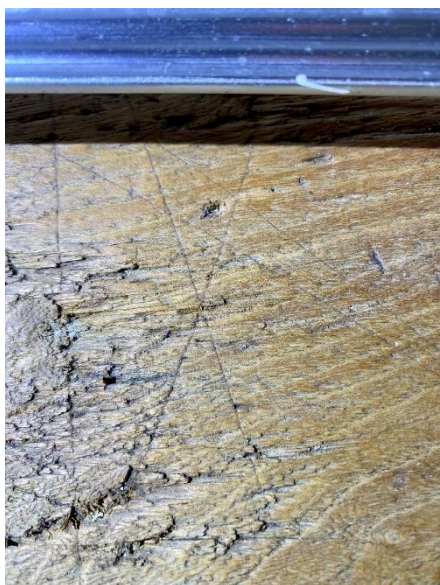
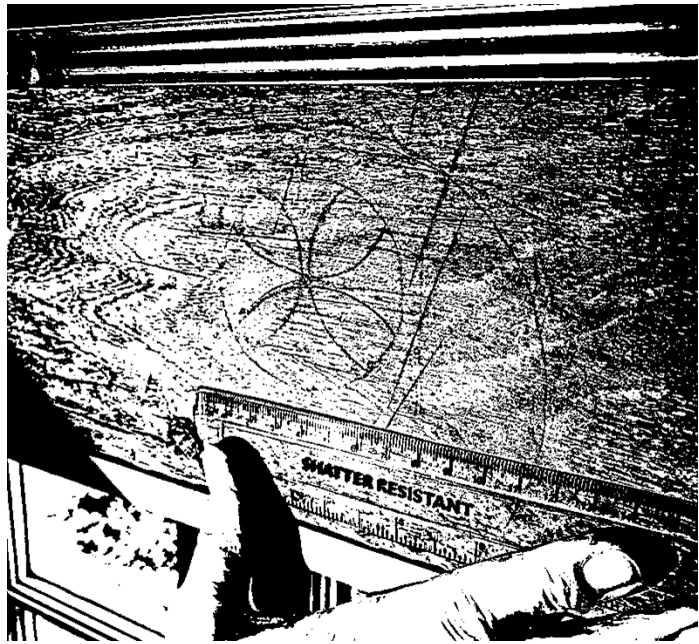
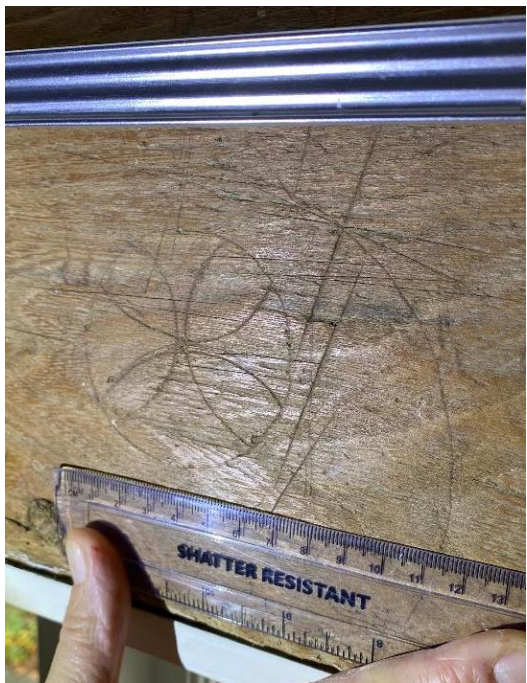
Arrow (youngest)



## First floor, north bedroom.

4 circles One large consecration cross (15cm diameter), circle scored out (deeper cut), second more perfect consecration cross 7 cm diameter, larger incomplete circle around it. M mark. All above the window on East side of bedroom. There are a number of carpenters marks.





## First floor, south facing bedroom

There are a number of carpenters marks and 2-3 small circular punch marks similar to those downstairs on a vertical door beam on the south of the bedroom. M over window, 1 burn mark. One other split line into 4 lines.

